

# ZONKE GOODE LIGHTING Co.,Ltd

Factory Add:Building B,NO.,57th,Muyu Road,Shatou,Chang'an Town,Dongguan,Guangdong,China

TECHNICAL DATA SHEET

## CREE LED Street Light 120W



Name: 120W LED STREET LIGHT

Model No. GD20101008



### Advantages

- Energy Saving up to 80%
- No UV or Mercury
- Virtually Maintenance Free
- Long Life Span up to 50,000 hours
- Green and Eco-friendly
- Special Unibody Modular Design, Easy installation
- Superior Light Quality : Cree LEDs with Meanwell Driver
- Optimal Thermal Transfer ,Patent Vapor Chamber Cooling Technologies

### Applications

- High Way ,Street, Parking lots
- Garden, Square
- Custom applications
- Sport Stadiums, Government projects
- Other Outdoor applications

# ZONKE GOODE LIGHTING Co.,Ltd

Factory Add:Building B,NO.,57th,Muyu Road,Shatou,Chang'an Town,Dongguan,Guangdong,China

## TECHNICAL DATA SHEET

### PRODUCT SPECIFICATIONS

Model No.	GD10201018
Power	120W
Dimmension	755*300*216MM
N.W.	9.25KG
Lens	65*135°
Installation	installed on the poles

### TECHNICAL CHARACTERISTIC

Color Temperature	Warm White	Nature White	Cool White
Kelvin	2700-3200K	4000-4500K	5500-6500K
Color Rendering Index	>75Ra		
Lumenious flux(65*135°)	8400lm	10200lm	11400lm
<u>Illuminance@10m</u>	21.46 lux	23.14lux	26.85lux
Lumen Efficacy	70LM/W	85LM/W	95LM/W
Power Consumption	120W		
Input Voltage	AC90-260V		
Output Voltage	DC36V~42V		
Frequency Range	43~64Hz		
P.F.	>0.95		
Equivalent	250W Metal Halide Philips or HPS		
IP Rating	IP65 Waterproof		

### MATERIALS & OTHER

LED Brand	CREE	Operating Temperature	-30°C~+50°C
LED Type	CREE XML	Working Humidity(Ambient)	10%RH~100%RH
LED Driver	Meanwell HLG-120H-42A	Storage Temperature	-35°C~+70°C
Housing	AL	Heat Sink Surface Temp.	52-58°C
lens	optical PC	Warranty	3 Years

### PACKING

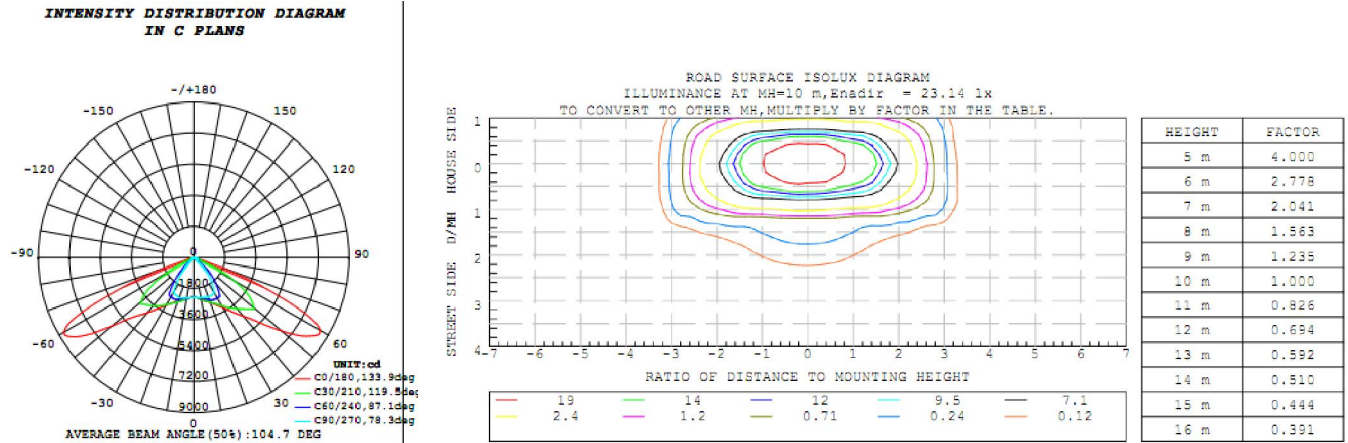
Packing	1 PC/CARTON(BOX)
Carton (Box)Size	L700XW350XH230MM
G.W.	10.5KG/CTN

# ZONKE GOODE LIGHTING Co.,Ltd

Factory Add: Building B, NO. 57th, Muyu Road, Shatou, Chang'an Town, Dongguan, Guangdong, China

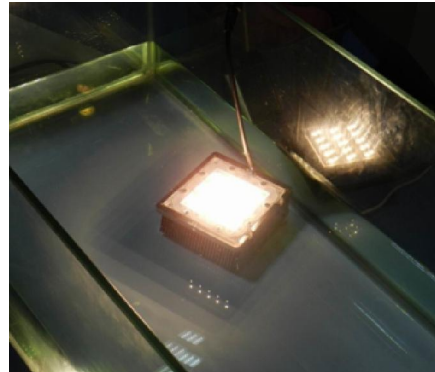
## TECHNICAL DATA SHEET

### Light Distribution Curve



### Creative Module Design

Use 4\*40W LED Module, Easy to Install and Maintenance. Unit 40W Module: 90°\*135° / 120°, IP65 Waterproof



Perfect Vapor Chamber Cooling Solutions (Vapor Chamber is a Super Conductive Material, he can carry the heat very fast)



Mounted LEDs on the Vapor Chamber by SMT Process



Weld one Vapor Chamber LEDs inside to be module



Fix the 2\*60W modules and Connected driver on the plate to be street light

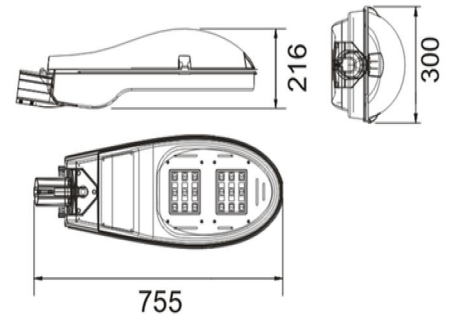
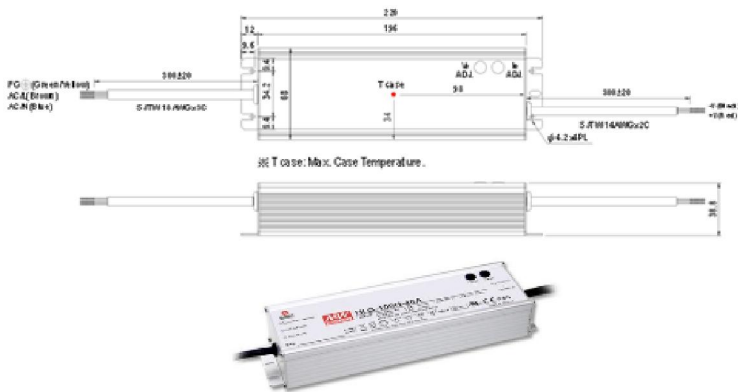
# ZONKE GOODE LIGHTING Co.,Ltd

Factory Add:Building B,NO.,57th,Muyu Road,Shatou,Chang'an Town,Dongguan,Guangdong,China

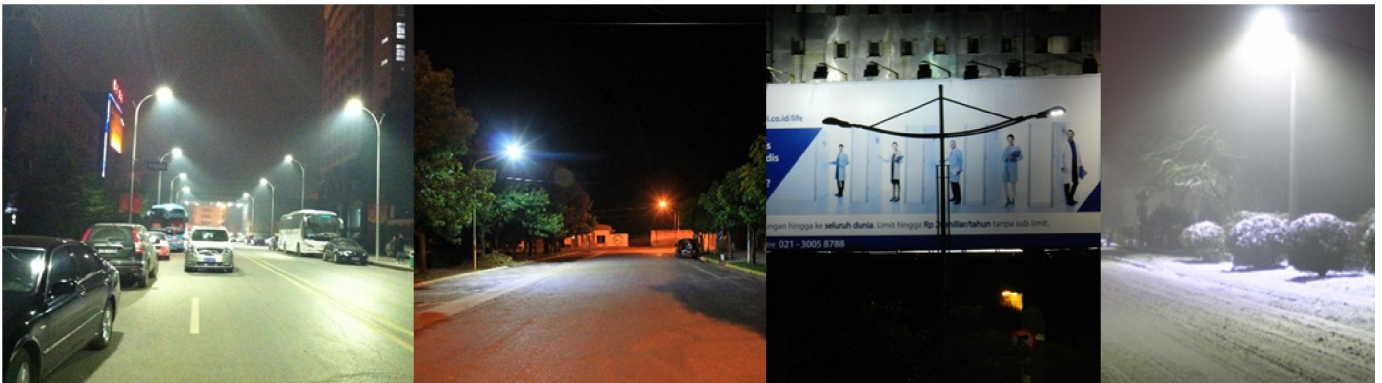
## TECHNICAL DATA SHEET

### Driver Size Meanwll HLG-120H-42A

### Dimmensions ( mm )



### Projects



### Package

